

Community Centre 55's 37th Annual Share a Christmas Programme

featuring

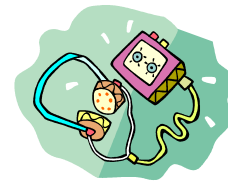
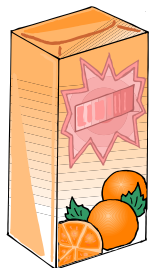
The Annual Food Drive

beginning December 3rd

(Deadline Friday, December 14th , 2018)

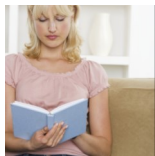
Please send pre-packaged foods in boxes, tins, or bottles. Some examples are: canned fruits and vegetables, canned fish, dried beans, rice, pasta, pasta sauce, fruit juices, breakfast cereal, peanut butter, baked beans, apple sauce, soups, stews

(Sorry, but food that has been re-packaged will not be accepted by Centre 55)



Teen Angel Programme

Consider including a gift for a teenaged child who often gets missed in our enthusiasm in giving to the very young. Last year's gift cards were welcomed with much enthusiasm.



Decorate our Mitten Tree

with *new*

mittens, gloves, hats, scarves, and or socks in sizes for all age groups.



Pet Lover's Programme

Consider donating pet food, treats or toys to the other family member who often needs our support



*Thank you for your support from the
Earl Haig Public School Community.*

